

1 Background Review – Natural Heritage

Focus Area 1

- Existing hamlet of Nashville
- Manicured/landscaped grounds associated with existing residences and commercial properties
- Mixture of planted native and non-native trees and shrubs
- Scott's Bush located to the southwest (remnant deciduous woodlot)
- Remnant forest/wetland features located to the southeast (adjacent to railway line)
- Potential linkage connection between woodlot/wetland features along the southern edge of the hamlet



Opportunities and Constraints



Vegetation

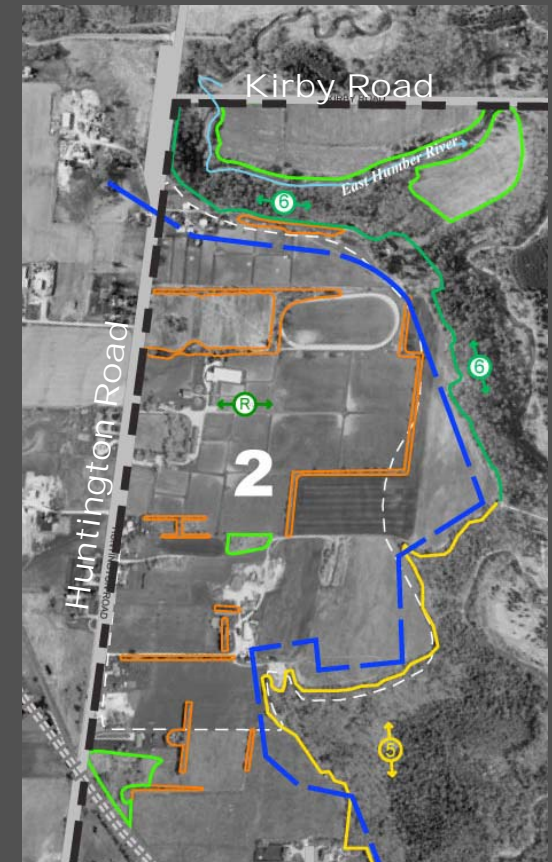
1 Background Review – Natural Heritage

Focus Area 2

- Agricultural land interspersed with minor field border hedgerows and shelter belt plantings
- Level to gently undulating tableland
- Ornamental plantings and shelterbelt plantings associated with existing residences and farmsteads
- East Humber River Valley flanks the focus area on the east and north



Opportunities and Constraints



Vegetation

1 Background Review – Natural Heritage

Focus Area 3

- Existing residential lots associated with conifer plantations (pine, spruce)
- Plantations identified as Significant Woodland
- Plantations are part of a larger block that extends north and south of Kirby Road
- Part of the Greenbelt Plan NHS
- 30 metre buffer requirement from natural heritage features



1 Background Review – Natural Heritage

Focus Area 4

- Existing residential lots
- Properties flank valley slopes (TRCA ESA, Significant Woodland)
- Cultural old field meadow and cultural woodland on tableland
- Deciduous forest associated with adjacent valley - part of Greenbelt Plan NHS
- Slope constraints along Kirby Road
- 30 metre buffer requirement from natural heritage features



Opportunities and Constraints



Vegetation

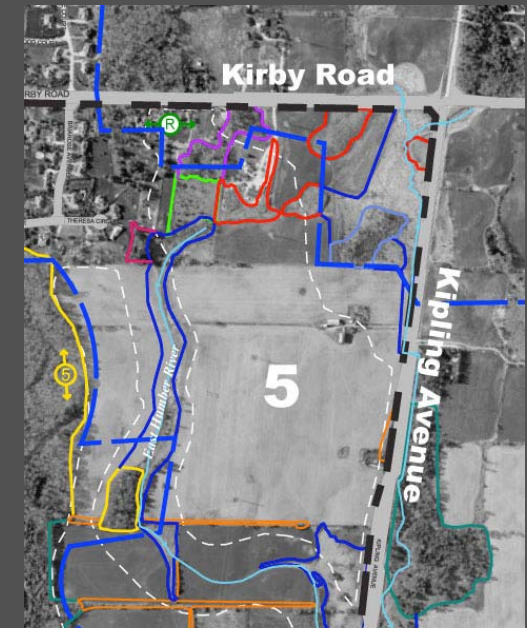
1 Background Review – Natural Heritage

Focus Area 5

- Agricultural land with minor field border hedgerows
- Rolling, undulating topography with well drained soils
- Riparian wetlands associated with seasonal watercourses along the west and east edge
- Fill placed along the edges of the wetland in the northeast corner
- Small woodlot associated with westerly watercourse – hedgerow connection between woodlot and adjacent East Humber River valleyland



Opportunities and Constraints



Vegetation

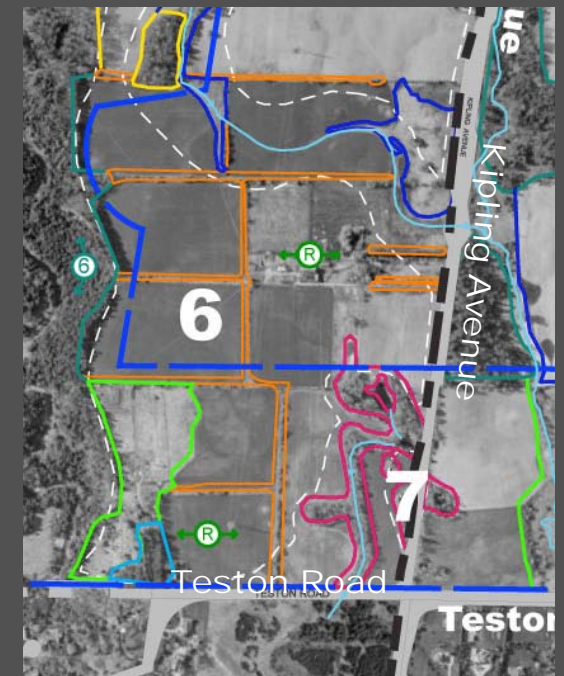
1 Background Review – Natural Heritage

Focus Area 6 & 7

- Agricultural land
- Wetlands associated with seasonal watercourse and closed depressions in southeast corner
- Rolling, undulating topography
- Cultural old field meadow, coniferous hedgerows, and ornamental plantings associated with farmsteads
- East Humber River valleyland flanks focus area on the west – mix of forest, wetland and cultural plant communities



Opportunities and Constraints



Vegetation