

TOTAL GROSS FARM RECEIPTS AND FARM AREA BY LOCAL MUNICIPALITY

\$ 2016 Total Gross Farm Receipts (\$)
 2016 Total Farmland Area (Acres)

% Change in Gross Farm Receipts 2011 to 2016

% Change in Farmland Area 2011 to 2016

\$ 6,997,002¹ -14%
 4,076 acres¹ -27%

GEORGINA
 \$ 20,709,539 -23%
 24,096 acres -29%

EAST GWILLIMBURY
 \$ 96,797,280 40%
 24,670 acres -26%

WHITCHURCH-STOUFFVILLE
 \$ 33,724,735 -1%
 17,127 acres -25%

KING
 \$ 83,898,106 17%
 40,250 acres 5%

VAUGHAN
 \$ 26,171,283 7%
 7,584 acres 4%

MARKHAM
 \$ 33,164,453 28%
 24,782 acres 112%

NEWMARKET
 AURORA
 RICHMOND HILL

York Region had the second highest gross farm receipts per acre in the Golden Horseshoe² at **\$2,114** per acre

From 2011 to 2016, York Region recorded a decrease of **116 farms** (14 per cent) and **10,974 Acres** (7 per cent) of farmland

Farmland accounted for **32 per cent** of York Region's land area in 2016, down from 43 per cent in 1991

71 per cent of farms in York Region are less than 130 acres in size

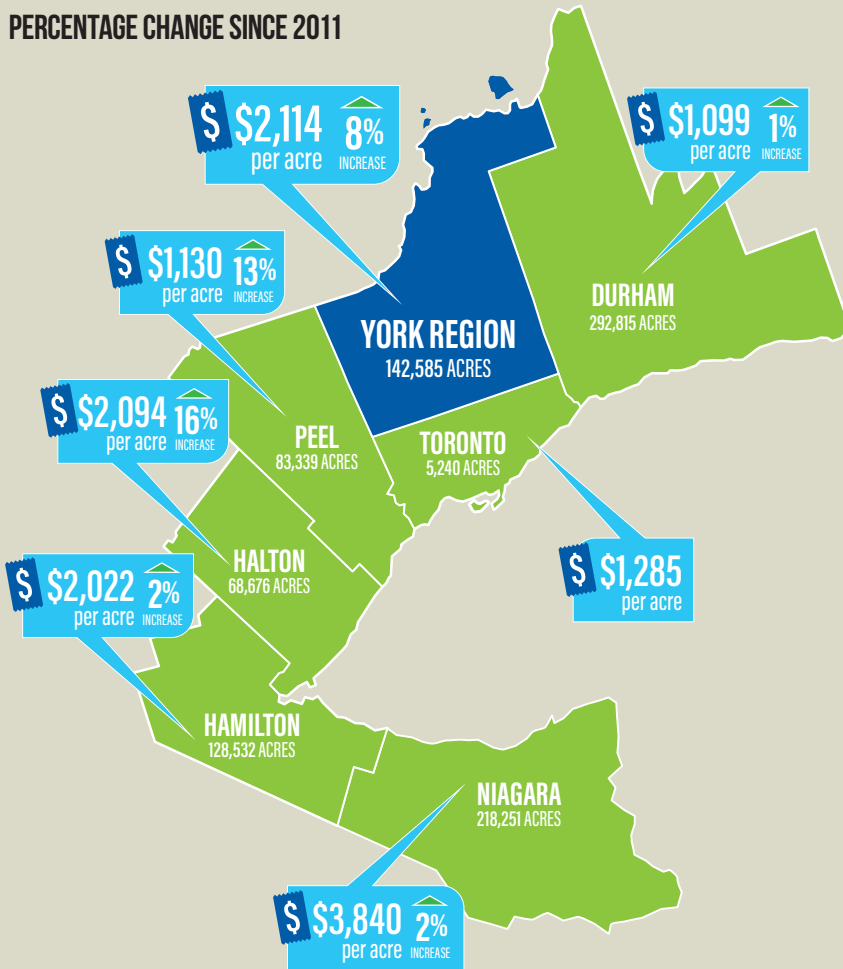
61 per cent of farm operators in York Region are over the age of 55

¹ For the 2016 Census of Agriculture, the Towns of Aurora, Newmarket and Richmond Hill are reported as one consolidated Census Subdivision

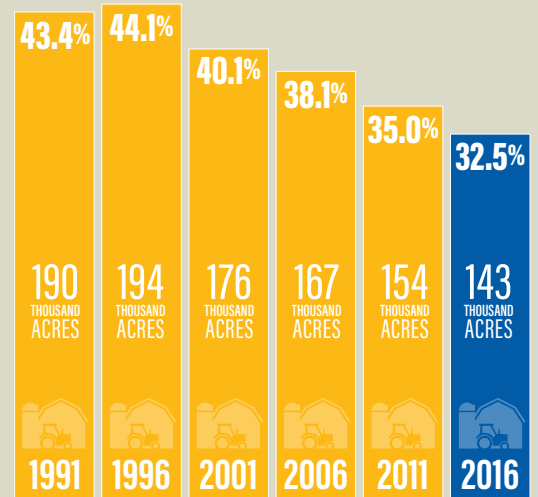
² Golden Horseshoe in this bulletin refers to the municipalities that make up the Golden Horseshoe Food and Farming Alliance which includes: Durham, York, Toronto, Peel, Halton, Hamilton and Niagara.

2016 GROSS FARM RECEIPTS PER ACRE ACROSS THE GOLDEN HORSESHOE

PERCENTAGE CHANGE SINCE 2011

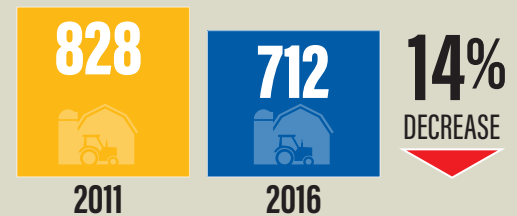


YORK REGION FARM AREA BY CENSUS YEAR



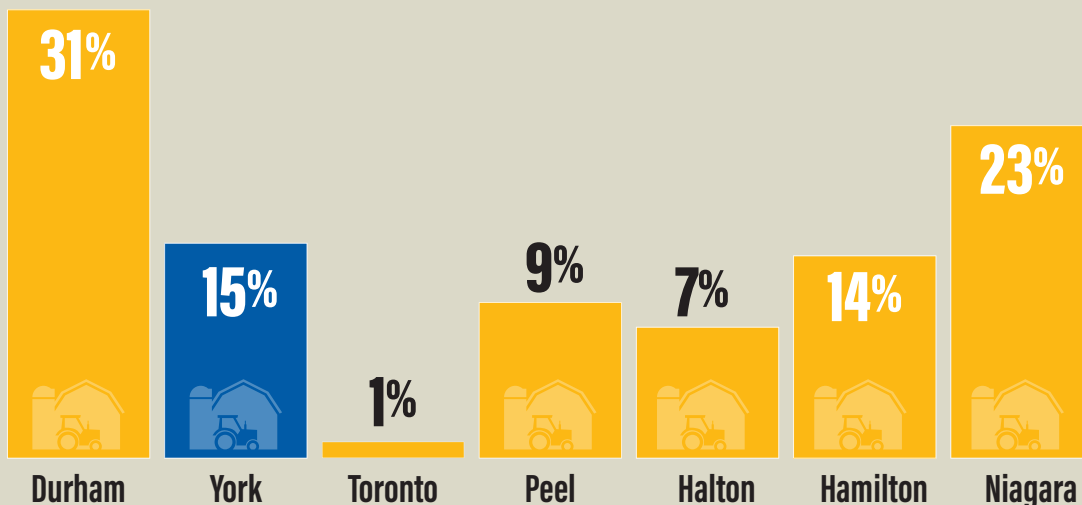
Per cent of Total York Region Land Area

NUMBER OF FARMS IN YORK REGION

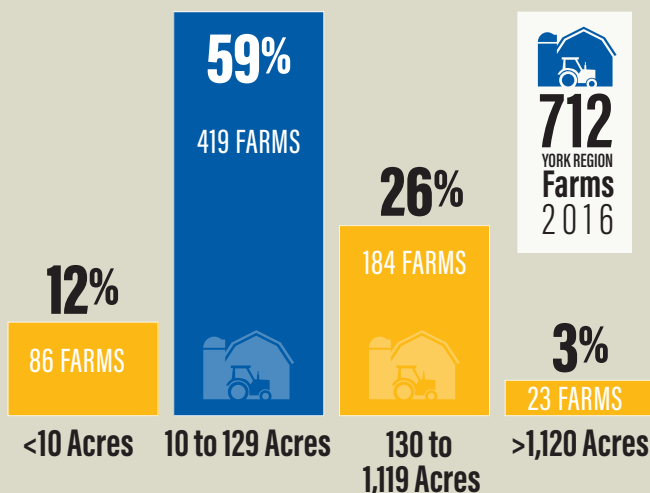


15 PER CENT OF TOTAL FARMLANDS IN THE GOLDEN HORSESHOE ARE IN YORK REGION

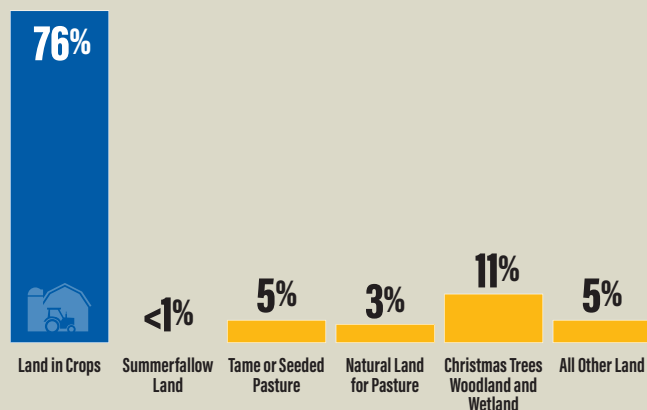
DISTRIBUTION OF FARMLAND ACROSS THE GOLDEN HORSESHOE



YORK REGION FARMS BY SIZE

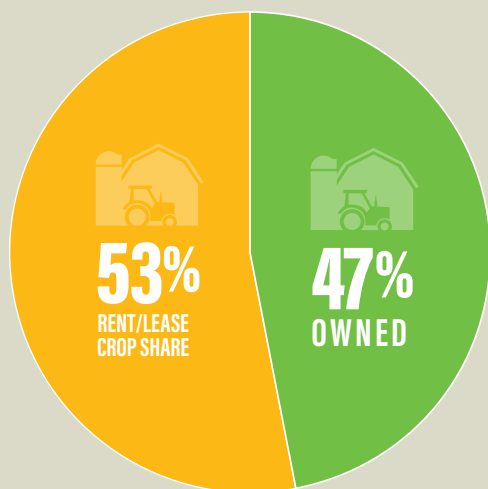


FARMLAND USES IN YORK REGION

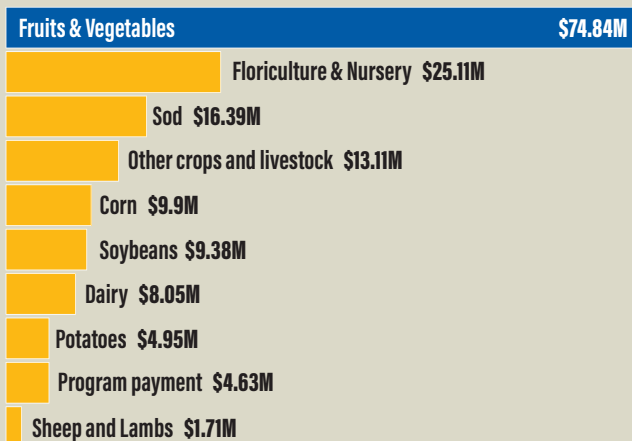


53 PER CENT OF ALL YORK REGION FARM LAND IS RENTED

YORK REGION FARMLAND TENURE

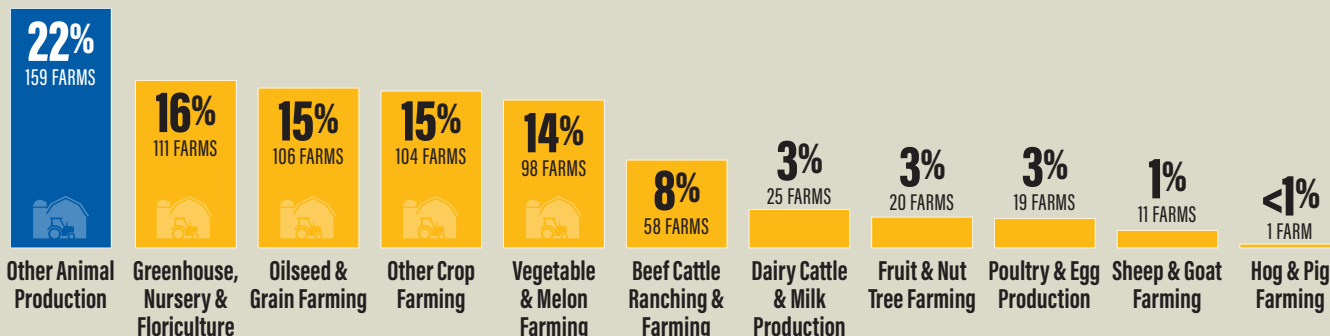


VALUE (\$) OF TOP COMMODITIES IN YORK REGION



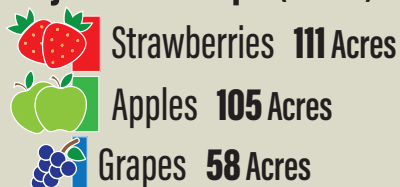
Source: 2016 Census of Agriculture and Strategic Policy Branch, OMAFRA

YORK REGION FARMS BY INDUSTRY

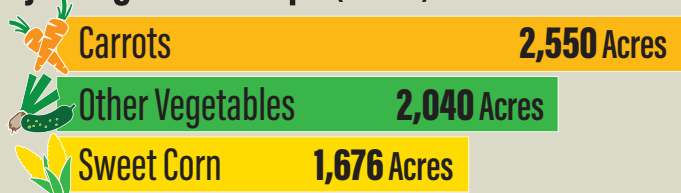


2016 YORK REGION TOP THREE MAJOR VEGETABLE, FRUITS AND FIELD CROPS

Major Fruit Crops (acres)



Major Vegetable Crops (acres)

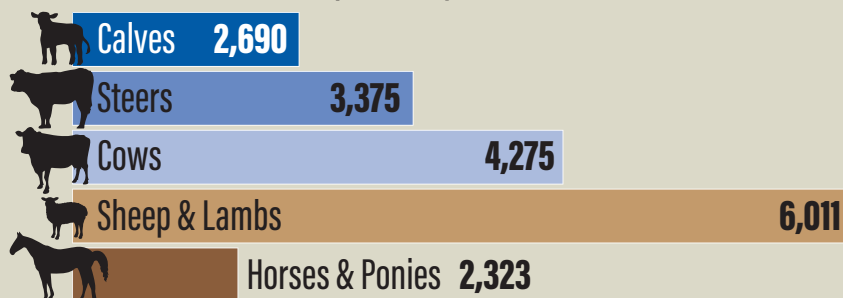


Major Field Crops (acres)



2016 YORK REGION LIVESTOCK AND POULTRY INVENTORIES

Livestock Inventories (number)



Poultry Inventories (number)



DID YOU KNOW?

- In 2016, 51 farms in York Region (7 per cent) reported using solar panels or wind turbines to generate renewable energy
- In 2016, 140 farms in York Region (20 per cent) reported selling directly to consumers, most of them selling unprocessed agricultural produces, mainly through farm gate sales, stands and kiosks
- 61 per cent of farm operators in York Region were 55 years of age and over in 2016
- York Region produced 375,257 dozens of eggs in 2016 , an increase of 22 per cent from 2011

Gross Farm Receipts are defined as farm cash receipts measuring the gross revenue of farm businesses in 2016 dollars including sales of crops, livestock products and program payments.

For questions, please contact Long Range Planning at paul.bottomley@york.ca or 1-877-464-9675 ext. 71530
For accessible formats or communication support, please contact Corporate Communications at 1-877-464-9675 ext. 71234